

# NiloCloud

A scalable, secure, and seamless cloud solutions



## NiloCloud

Designed to ease data logging and storage, the NiloCloud offers a unique insight in your operations at all levels. From service departments scheduling maintenance and calibration, creating statistics, and engaging into a meaningful dialogue with the customers, to clinics getting overview of production performance and contract holders being empowered to perform strategic decision making. All in your time and where you decide to do it. Sharing and engaging with colleagues over time and geography the NiloCloud is value creation beyond expectation and perhaps desire.

### Application & Technology

#### Reduce your workload

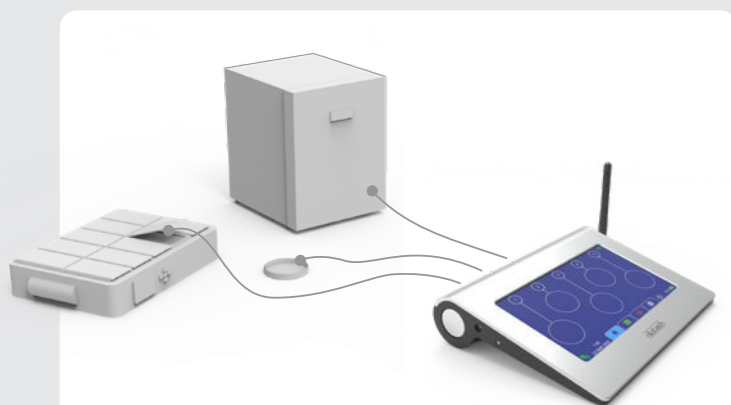
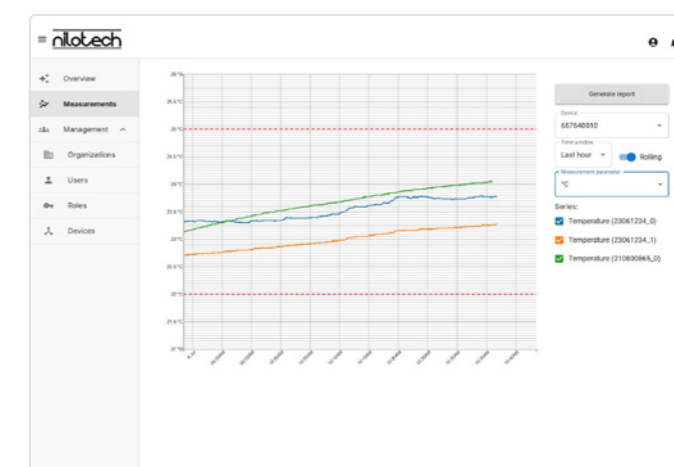
Automatic collection and storing of data for purposes of quality control and assurance, certification, audit, and long-term performance monitoring provides flexibility in prioritising your tasks.

#### Secure your data

All data collected from every piece of equipment connected to a NiloChecker is securely stored in the NiloCloud providing complete traceability and documentation.

#### Get notified

Get notifications at your convenience. Set your preferred limits and schedules and get notifications at your convenience by e-mail or text.



## Data Collection

The NiloChecker collects data directly from the source in your laboratory. This automation frees up time for you to focus on your artisan lab work.

Consolidated data allows you to check all parameters from all connected equipment simultaneously from one display.



## Workstation

**Monitor, analyse and collaborate.** From your workstation you can monitor equipment performance in real time and get notified, when set limits are crossed or discrete procedural steps have finished. You can analyse data from different sources and compare performance, in your own time and from everywhere. You can collaborate with colleagues and peers long-distance across continents and time-zones.

### Specifications

| NiloCloud                        |  |
|----------------------------------|--|
| Connection:                      | Via local WiFi or LAN/GSM via NiloRouter |
| Computer requirements (minimum): | Intel® i3, 4 Gb RAM                      |
| Cloud Storage Capacity:          | Unlimited one year storage               |
| Export format:                   | *.csv                                    |
| UPS for NiloRouter               |  |
| Input Voltage                    | 9-30 VDC                                 |
| Output Voltage (battery mode)    | 12 VDC                                   |
| Max Output (W/A)                 | 22W/1,8 Ampere                           |
| Battery Capacity                 | 2600mAh / 17Wh                           |
| Operating Time                   | 1,5 – 4 hours                            |

| NiloRouter                    |  |
|-------------------------------|--|
| Dimensions (w/o antennas)     | (114.5 x 93.6 x 32) mm                           |
| Weight                        | 360 g  |
| Interface                     | Input WiFi, Output LAN or GSM                    |
| Networking Interface          | (2) GbE RJ45 ports, LTE Category 4 radio WiFi 4. |
| Max Network Speed             | 150/50 Mbps (Down/Up)                            |
| WiFi Standard                 | 802.11 b/g/n, WiFi 2.4GHz                        |
| Ambient operating temperature | -40 °C – 70 °C                                   |
| Ambient operating humidity    | 5% to 95% noncondensing                          |
| Mounting                      | DIN rail/wall/pole mount (Included)              |



#### Ordering info

- Part no: 500s001 - NiloCloud Quarterly License
- Part no: 500s002 - Text service for NiloCloud
- Part no: 500s003 - NiloRouter Mobile Industrial Router
- Part no: 500s004 - UPS for NiloRouter

#### Nilotech ApS

Knudstrupvej 14 - DK-4270 Hoeng, Denmark  
+45 35 95 32 96 - contact@nilotech.eu - www.nilotech.eu